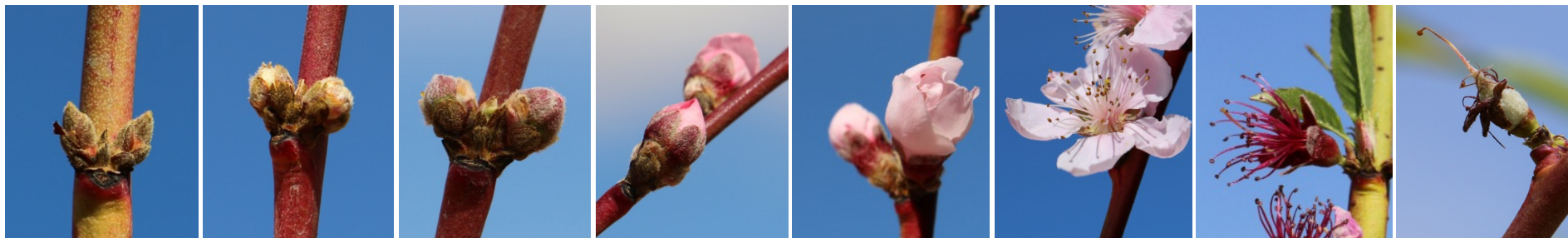


PEACH FLORAL BUD PHENOLOGY STAGES & CRITICAL TEMPERATURES (°C)

'Suncrest'



Bud Stage	1-First Swell	2-Green Calyx	3-Red Calyx	4-Pink Tip	5-First Bloom	6-Full Bloom	7-Petal Fall	8-Shuck Split
LT ₁₀ (°C)	-7.2	-3.3	-2.8	-2.8	-2.8	-2.2	-2.2	-2.2
LT ₅₀ (°C)	-12.2	-7.8	-5.6	-5.0	-4.4	-3.3	-2.8	-2.8
LT ₉₀ (°C)	-17.2	-12.2	-8.3	-6.7	-5.6	-4.4	-3.9	-3.9

'Cresthaven'



AGRICULTURAL
EXPERIMENT STATION
COLORADO STATE UNIVERSITY



HORTICULTURE AND
LANDSCAPE ARCHITECTURE
COLORADO STATE UNIVERSITY



COLORADO
Department of Agriculture



CSU_Pomology
Minas Lab

