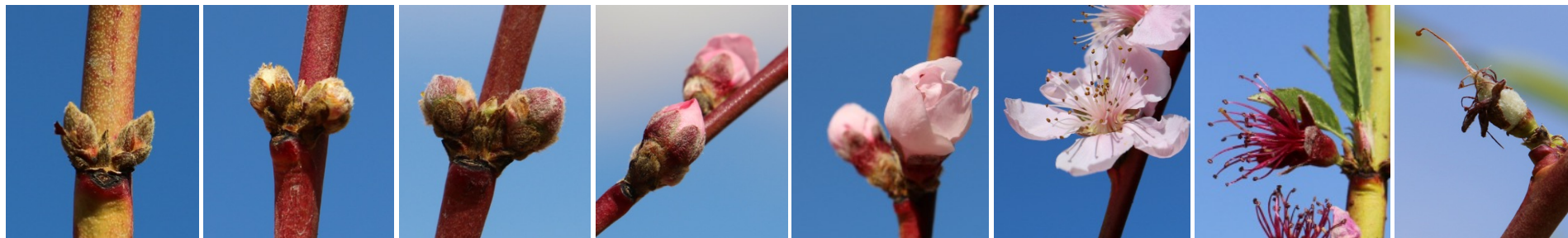


PEACH FLORAL BUD PHENOLOGY STAGES & CRITICAL TEMPERATURES (°F)

'Suncrest'



Bud Stage	1-First Swell	2-Green Calyx	3-Red Calyx	4-Pink Tip	5-First Bloom	6-Full Bloom	7-Petal Fall	8-Shuck Split
LT ₁₀ (°F)	19	26	27	27	27	28	28	28
LT ₅₀ (°F)	10	18	22	23	24	26	27	27
LT ₉₀ (°F)	1	10	17	20	22	24	25	25

'Cresthaven'



AGRICULTURAL
EXPERIMENT STATION
COLORADO STATE UNIVERSITY



HORTICULTURE AND
LANDSCAPE ARCHITECTURE
COLORADO STATE UNIVERSITY



COLORADO
Department of Agriculture



CSU_Pomology
Minas Lab

